

HEAVEN

WORDS & MUSIC: BRYAN ADAMS AND JIM VALLANCE
©COPYRIGHT 1984 IRVING MUSIC INC., ADAMS COMMUNICATIONS INC. AND CALYPSO TOONZ.
RONDOR MUSIC (LONDON) LTD., 10A PARSONS GREEN, LONDON SW6.
All Rights Reserved. International Copyright Secured.

Slow Rock ♩ = 66

mp
with pedal

The first system of the piano introduction features a treble clef staff with a melody of eighth and quarter notes, and a bass clef staff with a simple harmonic accompaniment. The tempo is marked 'Slow Rock' with a quarter note equal to 66 beats per minute. The dynamics are marked 'mp' (mezzo-piano) and 'with pedal'.

The second system continues the piano introduction with similar melodic and harmonic patterns in the treble and bass staves.

C Am7 G

1. Oh, think-in' a-bout__ all our young-er years;__ there was
2. Oh, once in your life__ you will find some-one__ who will

The vocal line is written in a treble clef. Above the staff are three guitar chord diagrams: C major, Am7, and G major. The lyrics are written below the staff, with two verses of the first line.

mp

The piano accompaniment for the first system of the vocal line, featuring a treble clef staff with chords and a bass clef staff with a simple harmonic accompaniment. The dynamics are marked 'mp'.

Dm Am Bb add 2 Gsus G

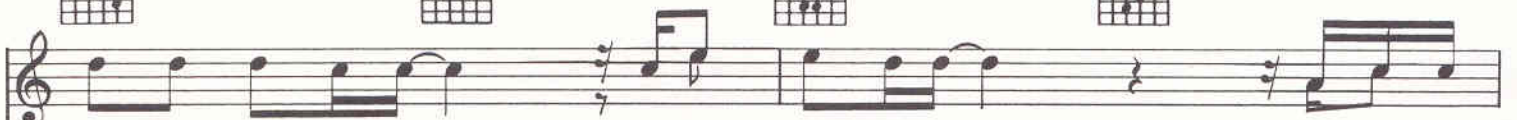
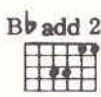
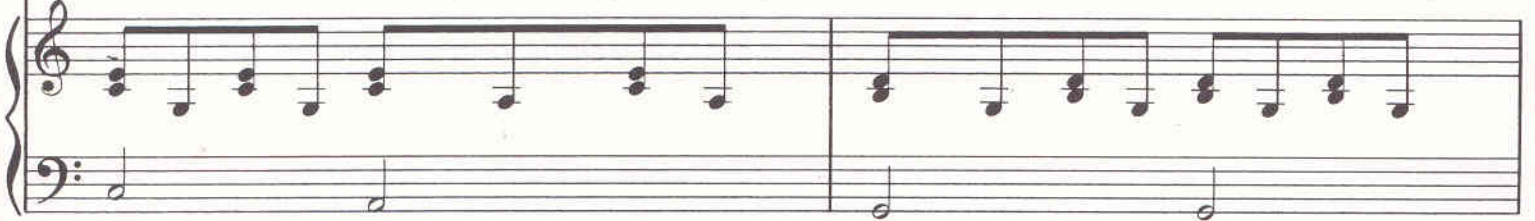
on - ly you__ and me;__ we were young and wild__ and free.__
turn your world_ a - round;_ bring you up when you're feel - ing down..

The second system of the vocal line continues with the same treble clef staff and guitar chord diagrams (Dm, Am, Bb add 2, Gsus, G). The lyrics continue across two lines.

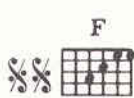
The piano accompaniment for the second system of the vocal line, featuring a treble clef staff with chords and a bass clef staff with a simple harmonic accompaniment.



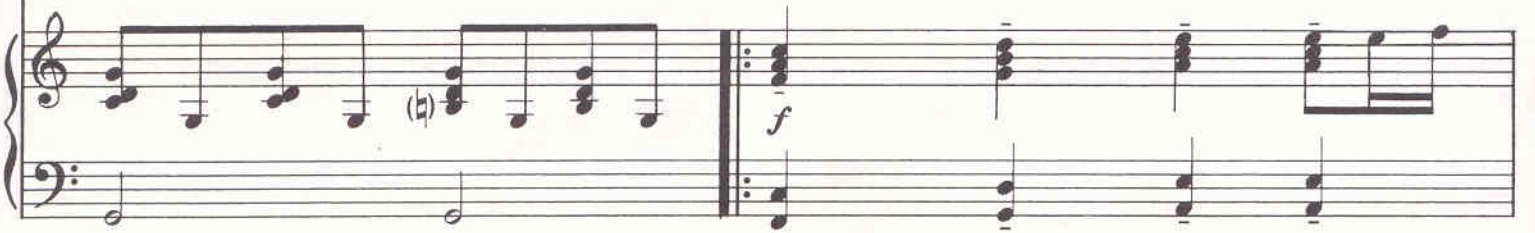
Now noth - ing can take_ you a - way from me;_ we've been
 Yeah, noth - ing could change_ what you mean to me. Oh, there's



down that road be - fore,_ but that's o - ver now;_ you keep me
 lots that I could say;_ just hold me now,_ 'cause our



com-in' back for more._ And Ba-by, you're all_ that I want when you're
 love will light the way;_ ba-by,)



ly - in' here_ in my arms. I'm find-ing it hard_ to be - lieve we're in



simile

G F G Am

heav - en. And love is all that I need, and I

C F G Am

found it there in your heart. It is - n't too hard to see we're in

1. Gno3rd C Am C/G F add 2 D.S. ♩

heav-en.

2. G To next strain 3. G Repeat ad. lib. and fade

heav-en. heav - en, heav - en.

Dm



C/E



F



G



I've been wait - ing for___ so long for some - thing___ to ar - rive;___

Am



G/B



C



Dm



C/E



___ for love___ to come a - long. ___ Now our dreams are com - in' true, ___

F



C



Gsus



G



___ through the good times and the bad. ___ Yeah, I'll be stand - in' there___ by___ you.

F



G



Am



C



F



G



Am



G



D.S.S. $\frac{3}{4}$ $\frac{3}{4}$

And

Instrumental solo

-----end solo