

The Lazy Song

Bruno Mars

Transcribed by: Phillip Te

[youtube.com/TeeeeePeeeee](https://www.youtube.com/TeeeeePeeeee)

Piano

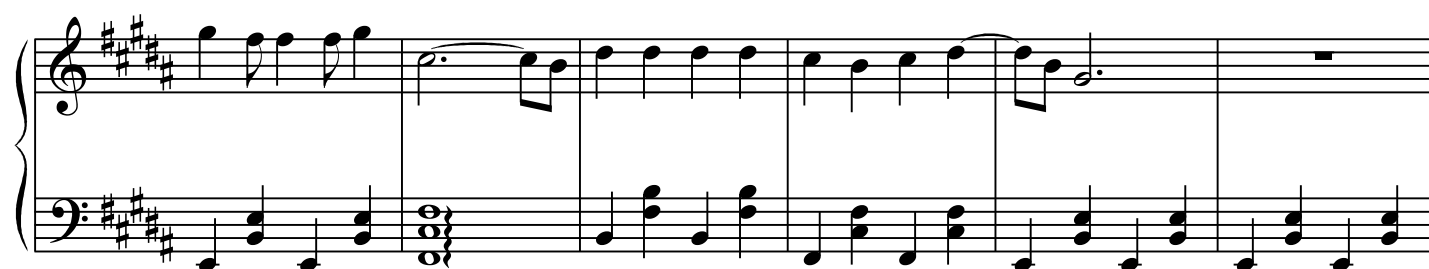
The first system of the piano accompaniment. The treble clef staff contains whole rests for the first four measures, followed by a quarter rest and an eighth note G4 in the fifth measure. The bass clef staff features a steady eighth-note accompaniment in the key of D major (D, F#, A, C#).

The second system of the piano accompaniment. The treble clef staff has a half note D4, followed by a half note G4, and then whole rests for the next two measures. The bass clef staff continues the eighth-note accompaniment.

The third system of the piano accompaniment. The treble clef staff begins with a quarter rest and an eighth note G4, followed by a series of eighth and quarter notes. The bass clef staff continues the eighth-note accompaniment.

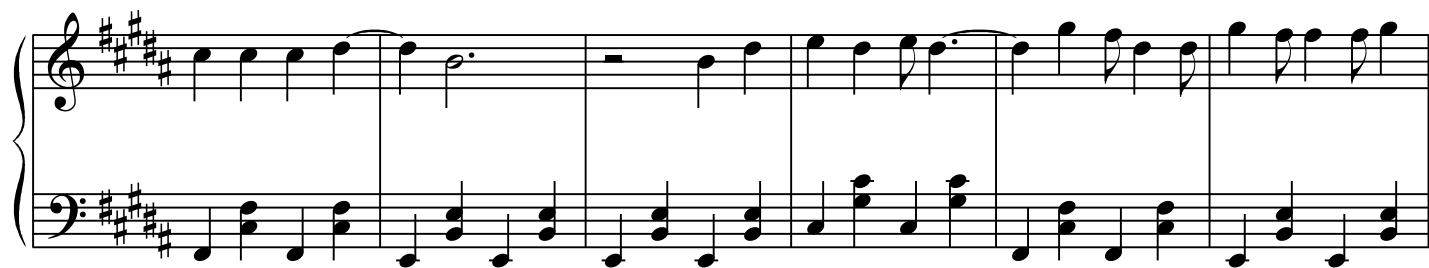
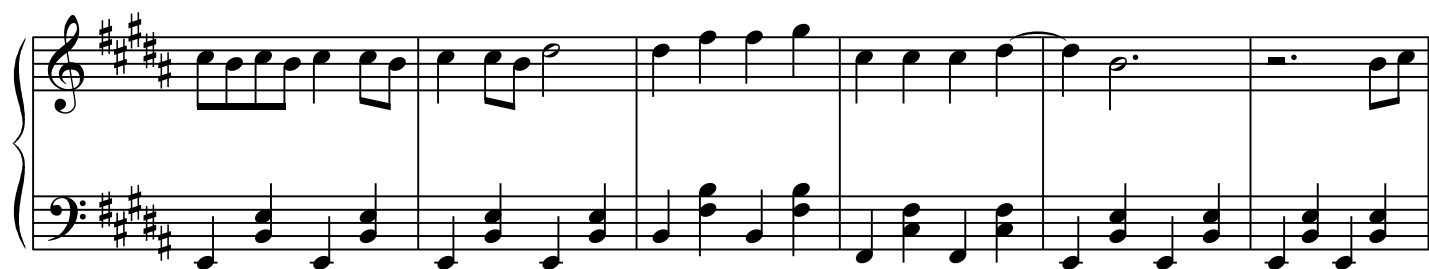
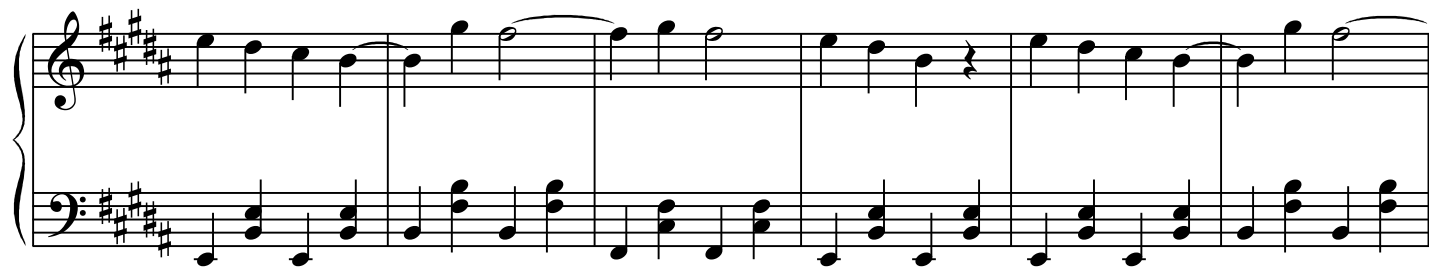
The fourth system of the piano accompaniment. The treble clef staff has a half note D4, followed by a half note G4, and then whole rests for the next two measures. The bass clef staff continues the eighth-note accompaniment.

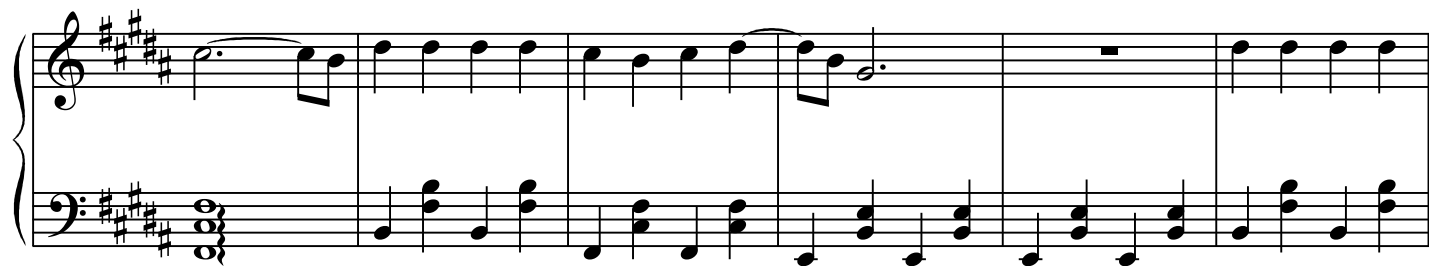
The fifth system of the piano accompaniment. The treble clef staff features a series of eighth and quarter notes. The bass clef staff continues the eighth-note accompaniment.



The Lazy Song

3





The Lazy Song

5

[illegible]

A musical score for the song 'The Rose Tree'. The score is written for a piano, with a treble and bass staff. The key signature is three sharps (F#, C#, G#), and the time signature is 4/4. The melody is in the treble staff, and the accompaniment is in the bass staff. The melody consists of a series of eighth and quarter notes, with a final half note. The accompaniment consists of a series of eighth and quarter notes, with a final half note. The score is divided into four measures by vertical bar lines.

A musical score for the song 'The Rose Tree'. The score is written for piano (indicated by a large curly brace on the left) and features two staves: a treble staff and a bass staff. The key signature is three sharps (F#, C#, G#), and the time signature is 4/4. The melody is primarily in the treble staff, while the bass staff provides a harmonic accompaniment with chords and single notes. The piece consists of 16 measures, with a repeat sign at the beginning and a final double bar line at the end.

A musical score for the song 'The Rose Tree'. The score is written for a piano, with a treble and bass staff. The key signature is three sharps (F#, C#, G#), and the time signature is 4/4. The melody is in the treble staff, and the accompaniment is in the bass staff. The melody consists of a series of eighth and quarter notes, with a final quarter note. The accompaniment consists of a series of eighth and quarter notes, with a final quarter note. The score is divided into four measures by vertical bar lines.

A musical score for the song 'The Rose Tree'. It features a treble and bass staff. The treble staff contains a melody with eighth and sixteenth notes, some beamed together, and a final half note. The bass staff provides a harmonic accompaniment with chords and single notes. The key signature has three sharps (F#, C#, G#) and the time signature is 4/4. The piece concludes with a double bar line.

6

The Lazy Song

