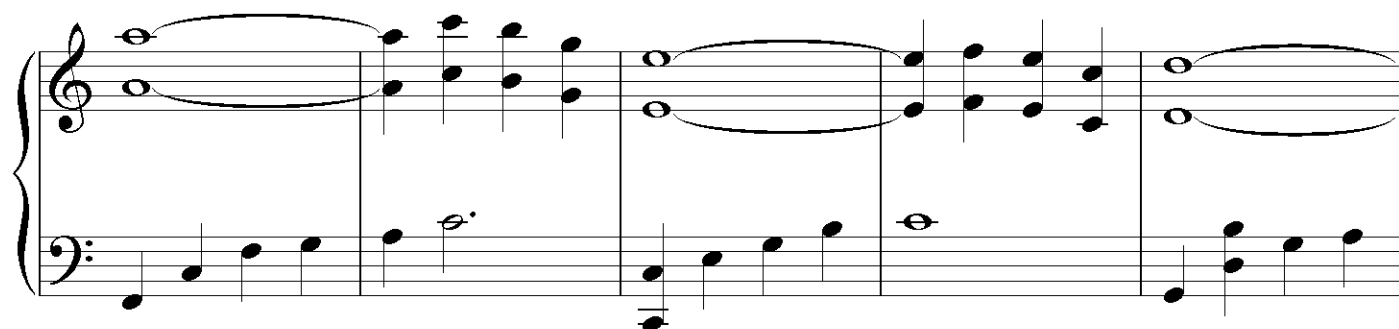
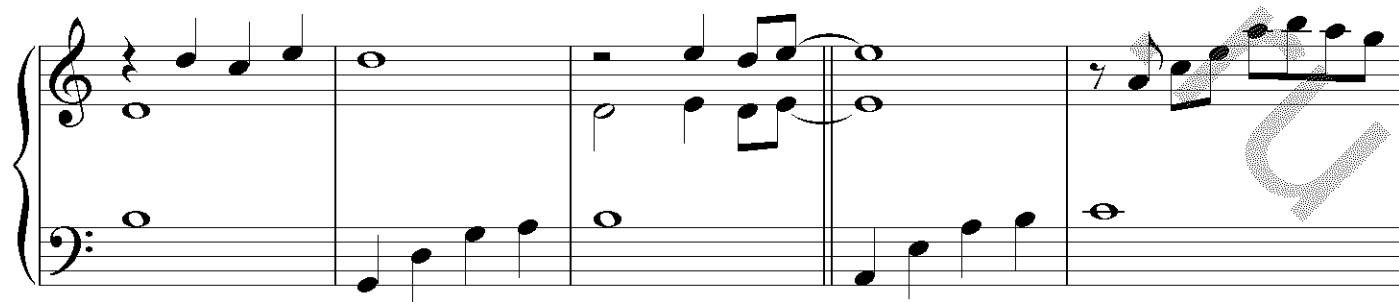
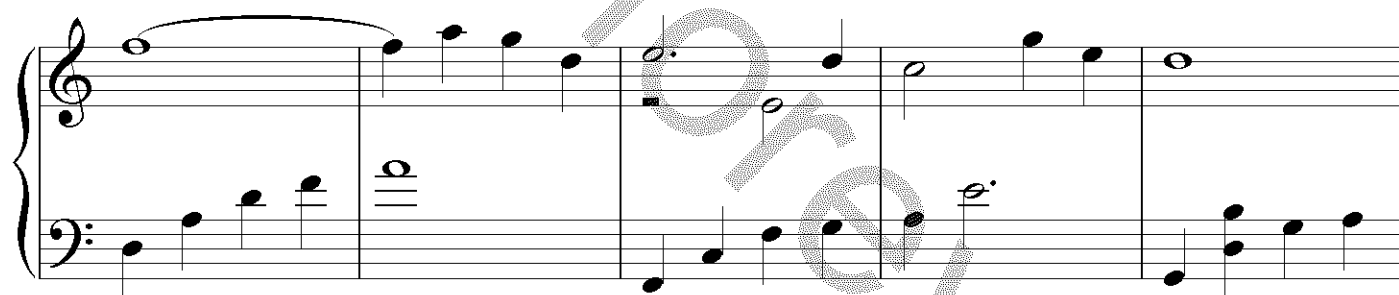
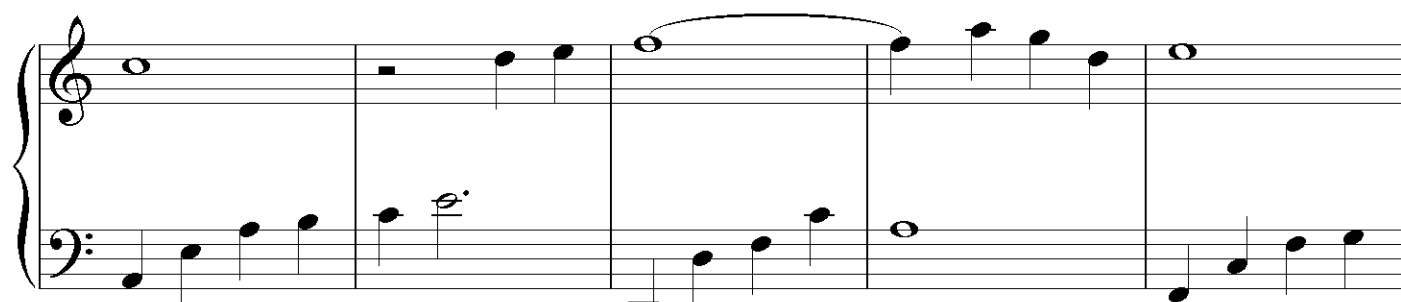
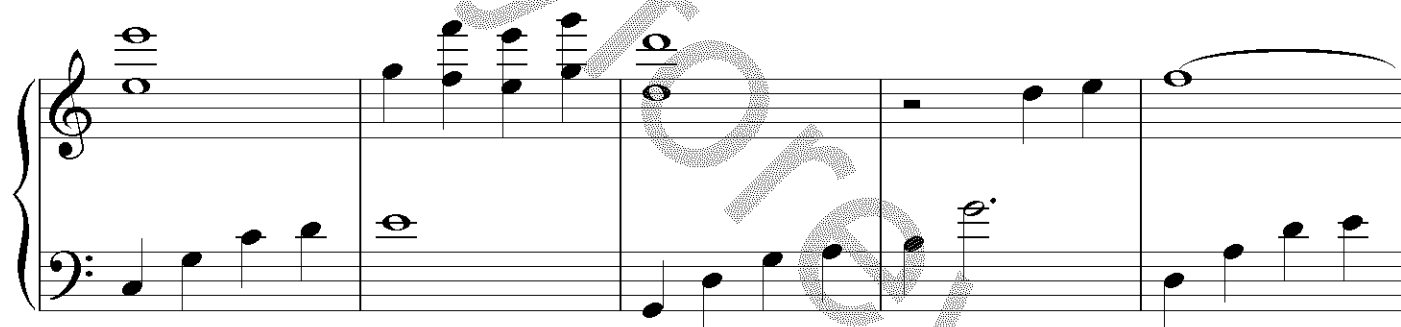


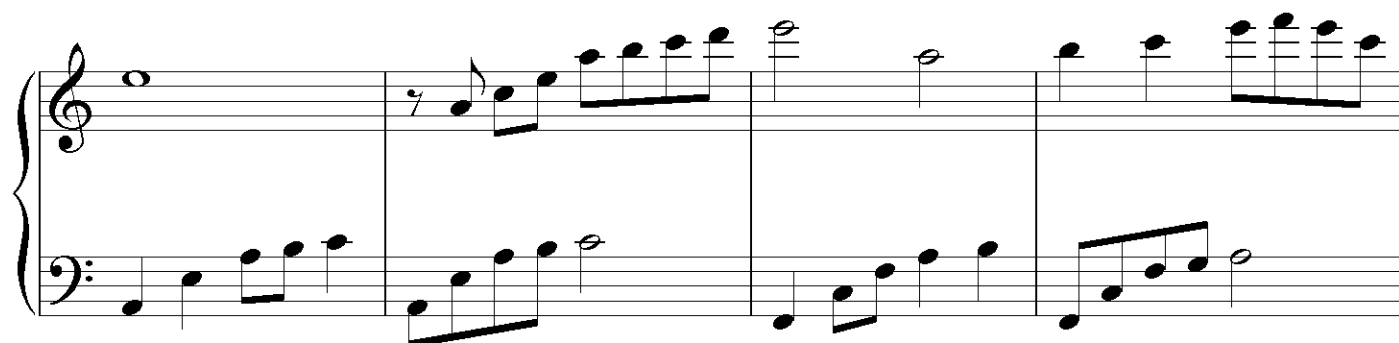
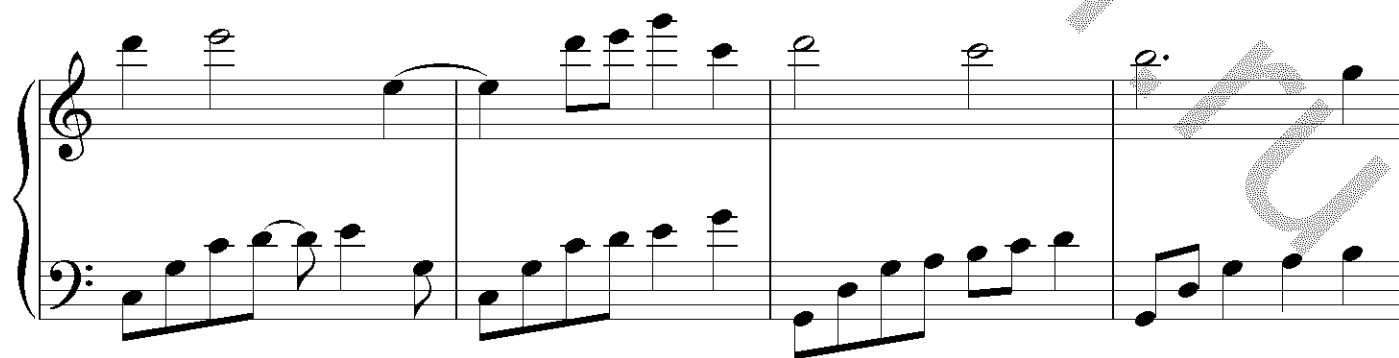
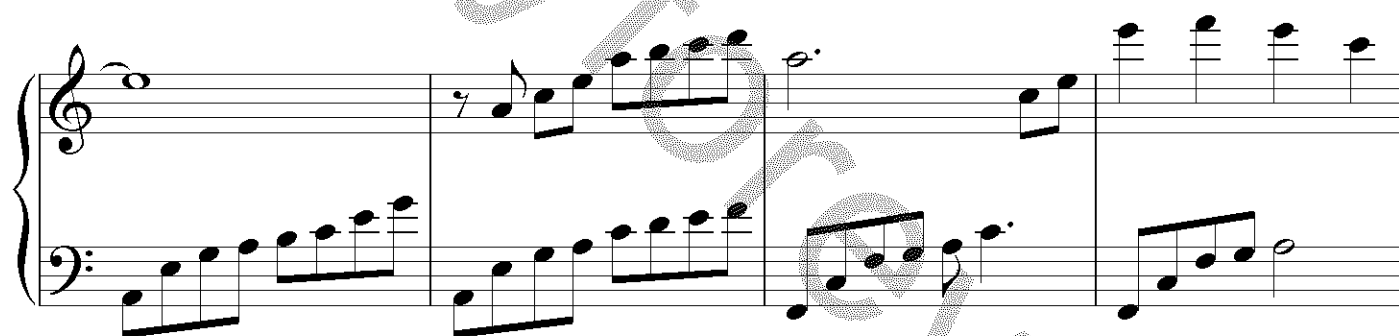
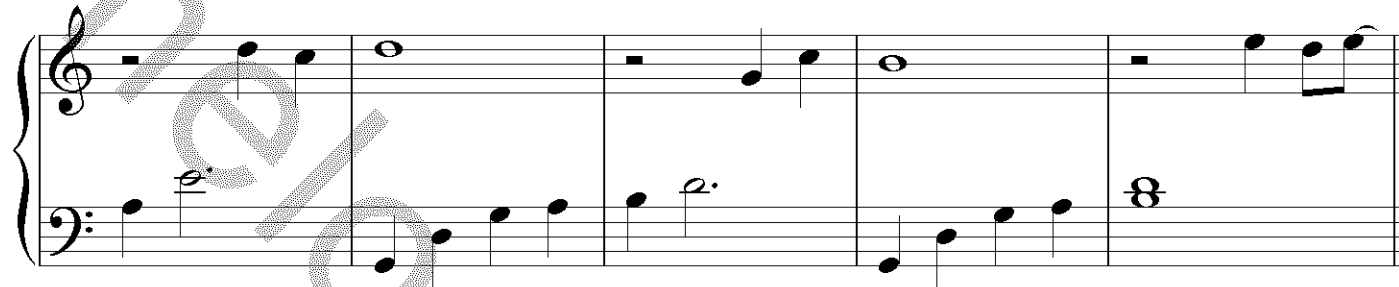
## Vitalie Rotaru - Digital Feelings

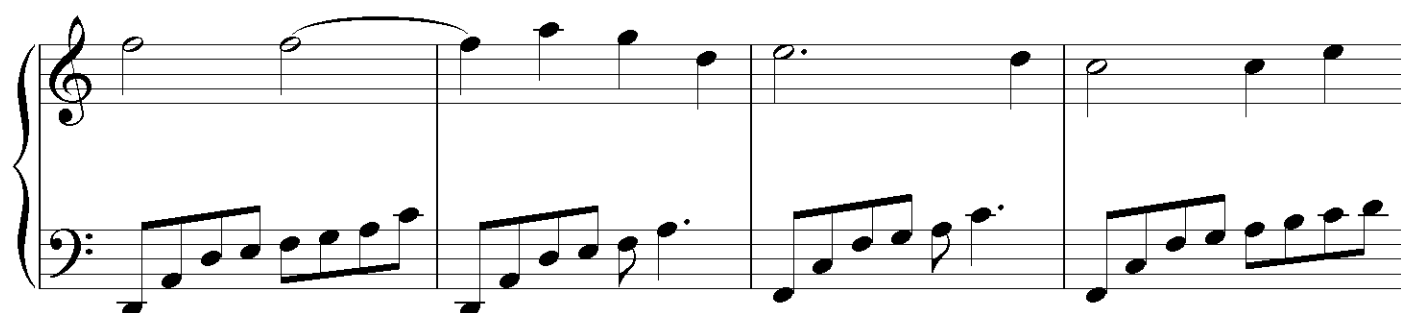
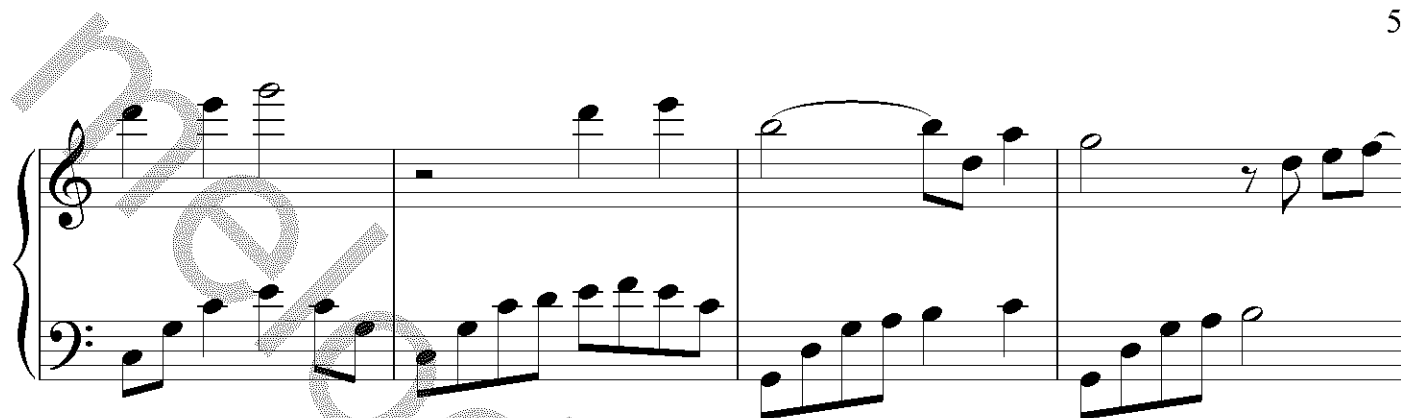
♩=120

The image displays a piano score for the piece 'Digital Feelings' by Vitalie Rotaru. The score is written for piano and is in 4/4 time, with a tempo marking of 120 beats per minute. It consists of four systems of two staves each (treble and bass clef). The music features a mix of eighth, quarter, and half notes, with some measures containing rests and others featuring beamed sixteenth notes. A large, diagonal watermark 'melodyforever.ru' is overlaid across the entire score.









A musical score for the song 'The Rose Tree'. It features a piano introduction in G major, 3/4 time. The score is written for piano with a grand staff (treble and bass clefs). The melody is in the treble clef, and the accompaniment is in the bass clef. The key signature has one sharp (F#), and the time signature is 3/4. The score includes a piano introduction and the first line of the song. The melody starts with a half note G4, followed by a quarter note A4, and then a quarter note B4. The accompaniment starts with a half note G2, followed by a quarter note A2, and then a quarter note B2. The score is watermarked with 'MusicalScoreCloud.com'.

8va

The image shows a musical score for the song 'The Rose Tree'. It consists of two staves, a treble clef staff and a bass clef staff, both in 4/4 time. The treble staff begins with a treble clef and a key signature of one flat (B-flat). The melody starts with a quarter rest, followed by a quarter note G4, an eighth note A4, a quarter note Bb4, and a quarter note A4. This is followed by a half note G4, a half note F4, and a half note E4. The melody then continues with a half note D4, a half note C4, and a half note Bb3. The bass staff begins with a bass clef and a key signature of one flat (B-flat). The bass line starts with a quarter rest, followed by a quarter note G3, an eighth note F3, a quarter note E3, and a quarter note D3. This is followed by a half note C3, a half note Bb2, and a half note A2. The score is marked with a '8va' (octave up) instruction at the beginning. A large, faint watermark reading 'For' is visible across the center of the page.

A musical score for the song 'The Rose Tree'. The score is written for a piano, with a treble and bass staff. The key signature is one flat (B-flat), and the time signature is 4/4. The melody is in the treble staff, and the accompaniment is in the bass staff. The score consists of five measures. The first measure has a circled '8' above it, indicating an eighth note. The melody starts on a half note G4, followed by a quarter note A4, a quarter note Bb4, and a half note G4. The bass staff starts with a half note G3, followed by a quarter note A3, a quarter note Bb3, and a half note G3. The second measure has a half note G4 in the treble and a half note G3 in the bass. The third measure has a half note G4 in the treble and a half note G3 in the bass. The fourth measure has a half note G4 in the treble and a half note G3 in the bass. The fifth measure has a half note G4 in the treble and a half note G3 in the bass. The score ends with a double bar line.

A musical score for the song "The Rose Tree". It consists of two staves, a treble staff and a bass staff, joined by a brace on the left. The treble staff contains a melody with a long note on the first staff line, followed by a series of eighth notes, and then a series of quarter notes. The bass staff contains a melody with a long note on the first staff line, followed by a series of eighth notes, and then a series of quarter notes. The score is written in a simple, clear style with black ink on a white background.